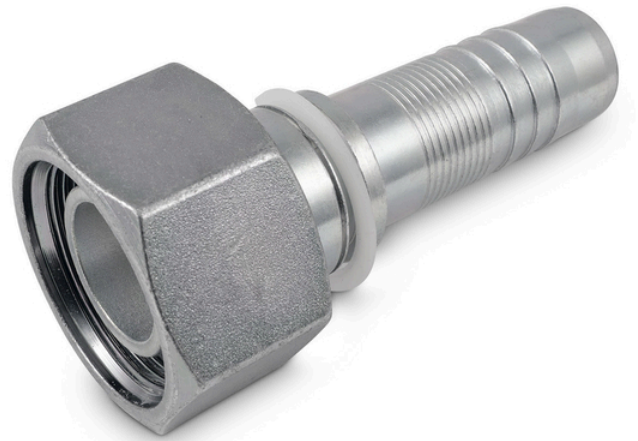


## PRESSNIPPEL ISOFLEX DIN METRISK RETT INNVENDIG

Pakningsoverflate: 24° kon og med o-ring



Varetekst	Art. nr.	Nominell diameter	Tilkoblingsgjenger	PK
Pressnippel ISOFLEX rett innv. 25S x 3/4	<b>5973 102 512</b>	3/4 in	Nominell diameter 36 mm x 2 mm	1
Pressnippel ISOFLEX rett innv. 25S x 1	<b>5973 102 516</b>	1 in	Nominell diameter 36 mm x 2 mm	1
Pressnippel ISOFLEX rett innv. 30S x 1	<b>5973 103 016</b>	1 in	Nominell diameter 42 mm x 2 mm	1
Pressnippel ISOFLEX rett innv.30S x 1 1/4	<b>5973 103 020</b>	1 1/4 in	Nominell diameter 42 mm x 2 mm	1
Pressnippel ISOFLEX rett innv.38S x 1 1/4	<b>5973 103 820</b>	1 1/4 in	Nominell diameter 52 mm x 2 mm	1

### Teknisk info

\*Non skive for ISOFLEX slanger