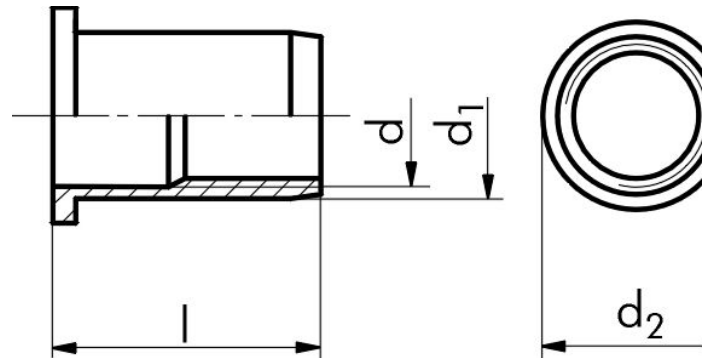


BLINDNAGLEMUTTERE SYLINDERHODE RUSTFRITT A2

Sylinderhode M4 - M10



| Varetekst | Art. nr. | Hodediameter | Utvendig diameter | PK |
|------------------------------------|-------------------|--------------|-------------------|-----|
| Blindnaglemutter Syl.Hd A2 M4x11 | 0942 100 4 | 9.0 mm | 5.9 mm | 100 |
| Blindnaglemutter Syl Hd A2 M5x13 | 0942 100 5 | 10.0 mm | 6.9 mm | 100 |
| Blindnaglemutter Syl Hd A2 M6x16 | 0942 100 6 | 12.0 mm | 8.9 mm | 100 |
| Blindnaglemutter Syl Hd A2 M8x17,5 | 0942 100 8 | 15.0 mm | 10.9 mm | 100 |

Teknisk info

Rustfritt A2

Polert